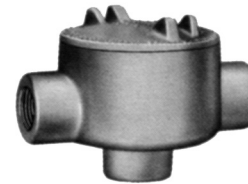
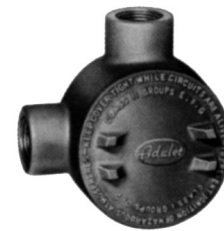


MULTI-HUB BOXES**Junction Boxes - Multi-Hub Boxes****XJAB****XJAC**

No bottom hub

**XJAD****XJAL**

No bottom hub

FEATURES

- Designed for general wiring in hazardous locations. For pulling and splicing conductors. Serves as mounting outlets with use of appropriate fixture covers
- Available with dome cover for additional splicing room and mounting of various devices
- Bodies XJAB, XJAD and XJAX 26 thru 46 have two interior mounting bosses, which can be blind tapped.
- Bodies XJAC, XJAL and XJAT 26 thru 46 have four interior mounting bosses, which can be blind tapped.
- All bodies 570 thru 890 have solid back, can be tapped blind.

Catalog #	Conduit Size (in.)	Standard Pkg. Qty.	Standard Pkg. Weight (lbs.)
XJAB-26	½	10	9
XJAB-36	¾	10	10
XJAB-46	1	10	12
XJAB-570	1 ¼	5	25
XJAB-690	1 ½	4	22
XJAB-890	2	4	23
XJAC-26	½	10	9
XJAC-36	¾	10	10
XJAC-46	1	10	12
XJAC-570	1 ¼	5	26
XJAC-690	1 ½	4	21
XJAC-890	2	4	23
XJAD-36	¾	10	9
XJAD-46	1	10	15
XJAL-26	½	10	9
XJAL-36	¾	10	10
XJAL-46	1	10	12
XJAL-570	1 ¼	5	26
XJAL-690	1 ½	4	21
XJAL-890	2	4	23

Certifications

Class I, Groups C & D

Class II, Groups E, F & G

UL Standard 886

CSA Standard C22.2 No. 30

NEMA 4 Watertight Optional-Consult Factory



MULTI-HUB BOXES

Junction Boxes - Multi-Hub Boxes



XJAT
No bottom hub

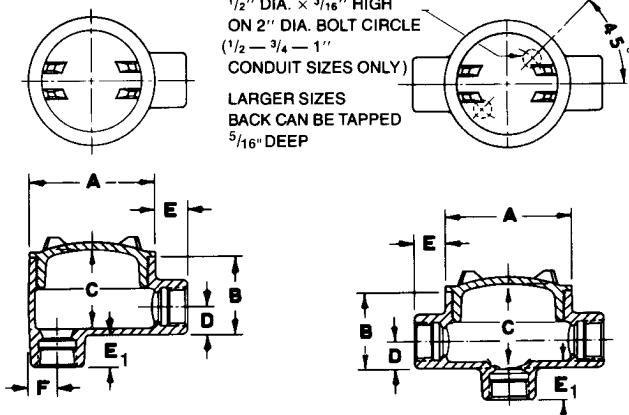


XJAX
No bottom hub

Catalog #	Conduit Size (in.)	Standard Pkg. Qty.	Standard Pkg. Weight (lbs.)
XJAT-26	1/2	10	10
XJAT-36	3/4	10	10
XJAT-46	1	10	13
XJAT-570	1 1/4	5	27
XJAT-690	1 1/2	4	21
XJAT-890	2	4	23
XJAX-26	1/2	10	12
XJAX-36	3/4	10	14
XJAX-46	1	10	15
XJAX-570	1 1/4	5	27
XJAX-690	1 1/2	4	21
XJAX-890	2	4	23

DIMENSIONS (INCHES)							
Conduit Size (in.)	A	B	C	D	E	F	E1
1/2	3 1/2	2	2	5/8	7/8	1 1/16	7/8
3/4	3 1/2	2	2	3/4	7/8	1 3/16	7/8
1	3 1/2	2 5/16	2 5/16	7/8	1	1 5/16	1
1 1/4	6 3/8	3 3/16	3 3/4	1 3/32	1 1/16	1 13/32	1
1 1/2	6 3/8	3 3/16	3 3/4	1 9/32	3/4	1 19/32	1
2	6 3/8	3 13/16	4	1 1/16	3/4	1 7/8	1

INTERIOR MOUNTING BOSSES
1/2" DIA. x 3/16" HIGH
ON 2" DIA. BOLT CIRCLE
(1/2 - 3/4 - 1"
CONDUIT SIZES ONLY)
LARGER SIZES
BACK CAN BE TAPPED
5/16" DEEP



Bottom hub on XJAB and XJAD styles only.

Certifications

Class I, Groups C & D
Class II, Groups E, F & G
UL Standard 886
CSA Standard C22.2 No. 30
NEMA 4 Watertight Optional-Consult Factory

